



PIPE SUPPORT



Plastic Hanger

This dual stud size clamping system will fit securely to both M8 and M10 studding.



Channel



Rod



Surface

Key Features

- Easy installation
- Fits on both M8 and M10 studding
- Avoids the need for cable tray
- Adjustable clipping mechanism

SPECIFICATIONS

Materials of construction	Nylon
Max. temp	70 °C
Max. rec. distance per clip	1,2 m

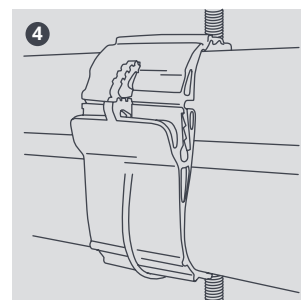
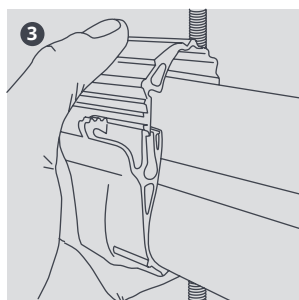
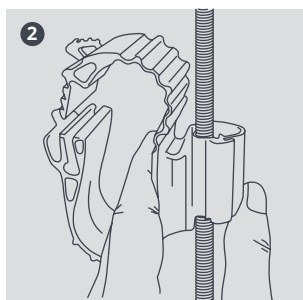
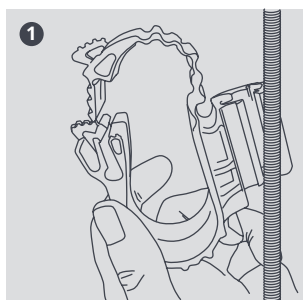
SIZING OPTIONS

Description	Liquid*	Gas*	Rod Fitting Size	Part No.	Pack Qty
P2	10 mm (3/8 ")	16 mm (5/8 ")	8 ou 10 mm	B6543/5	5
P3	13 mm (1/2 ")	22 mm (7/8 ")	8 ou 10 mm	B6544/5	5
P4	16 mm (5/8 ")	28 mm (1 1/8 ")	8 ou 10 mm	B6545/5	5
P2	10 mm (3/8 ")	16 mm (5/8 ")	6 ou 8 mm	B6715/5	5
P3	13 mm (1/2 ")	22 mm (7/8 ")	6 ou 8 mm	B6716/5	5
P4	16 mm (5/8 ")	28 mm (1 1/8 ")	6 ou 8 mm	B6717/5	5

* Approximate pipe sizes (allowing for insulation)



For further details please refer to our website [aspenpumps.com](https://www.aspenpumps.com)



Information correct at time of going to press. Not all products are available in all regions.